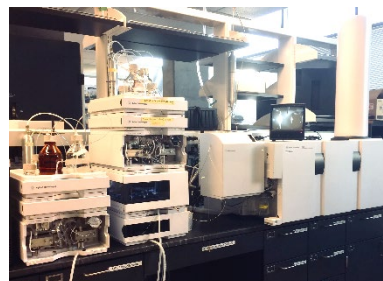
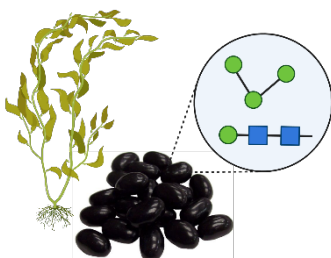


Exit Seminar (Hybrid)

Unleashing Plant Power by LC-MS: Characterization of underutilized plants for a more sustainable food system



Truc Pham

Wednesday, July 12th, 11:00 AM

1207 RMI South

Zoom: <https://ucdavis.zoom.us/j/93587108722>

ABSTRACT: Many sustainable plants are currently underutilized in food products because they are not adequately characterized. This work focuses on characterizing proteins and carbohydrates in beans, lentils, and algae to understand their potential use in future foods and diversify the pool of plants used in plant-based foods. LCMS analysis is also employed to identify valuable compounds in food processing waste, as well as guide the development of green extraction methods.

BIO: Truc received her B.A in Chemistry from Colorado College and her Culinary Arts Certification from the Art Institutes of Colorado. Following culinary school, she spent 4 years working in bioanalytical chemistry in academia and industry, specializing in LCMS analysis of proteins, lipids, metabolites, and small molecules. She joined the Barile lab in 2021 as an FSGG MS candidate to pursue an interest in plant-based foods and a passion for increasing the sustainability of our food systems.