

# Green Workplace Program

Allen Doyle, MS Chemical Oceanography  
Sustainability Manager  
Environmental Stewardship and Sustainability  
[Green Workplace Website](#)

# Overview

**Green vision**

**Four Steps**

**Concepts**

- People
- Resource Impact
- Green Actions
- Scoring
- Certification

**“Neighborhood”**

**Training**

# Campus Vision, Your Vision

## Zero Waste by 2020

- Reduce
- Reuse
- Recycle
- Compost!



## Climate Neutral by 2025

- Electricity & HVAC
- Travel



## Your Vision

- Green Leaf Pledge—a stretch
- Green Voice

# Four Step Program



- 1. Learn**
- 2. Commit**
- 3. Act and Assess**
- 4. Certify!**



# 1

## Learn

### Leader Orientation

- 15-30 Minutes





# 1

## Learn

### Leader Orientation

- 15-30 Minutes

### Select Green Champion

- 1-2 hours per week
- Fun!



# 2

## Commit

### Leadership Vision

- Match to Department and Staff
- Write on form
- Low time commitment

### Select Green Team

- 2-4 Module Leaders
- 1-2 hours each
- Assist the Champion



A comfortable MSO  
using natural lighting



# 3

## Act and Assess



### Kickoff

- Staff awareness and ENERGY

### Departmental Assessment

- Central Actions
- Five Modules

### Personal Assessment

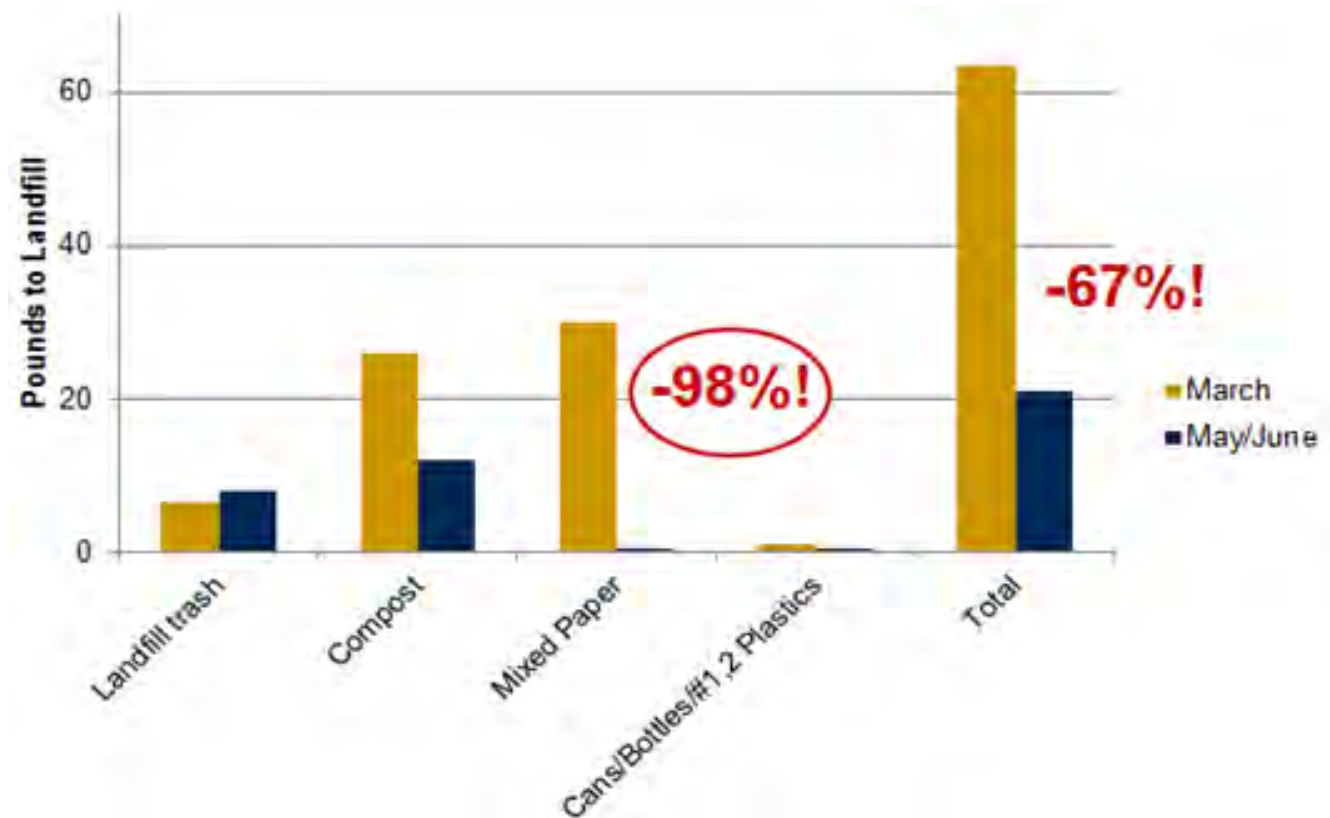
- Desk-side actions
- Green Leaf Survey



# Does it make a difference?

**YES!**

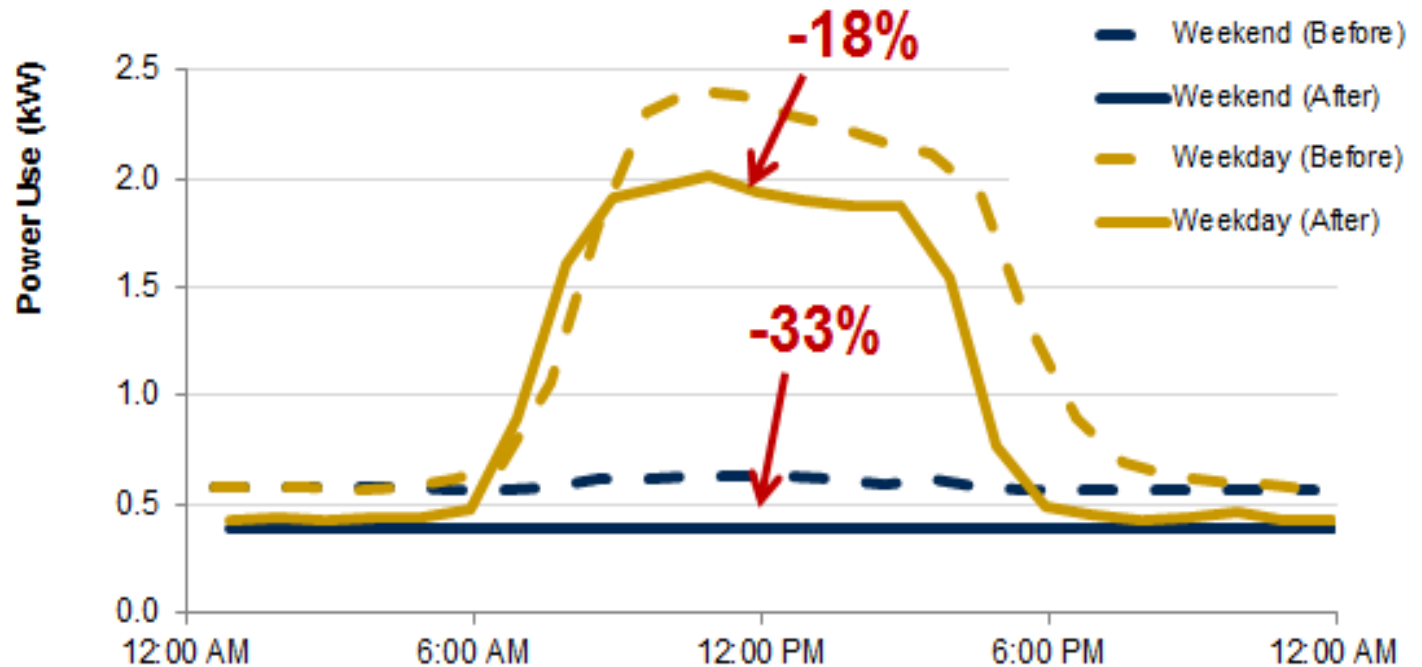
In one office landfill waste was reduced by two thirds while paper waste was eliminated!



# Does it make a difference?

**YES!**

Weekday electricity use was reduced 18% for one office.



# What does it Cost?

**Nothing!**

We give YOU a *Swag Bag*

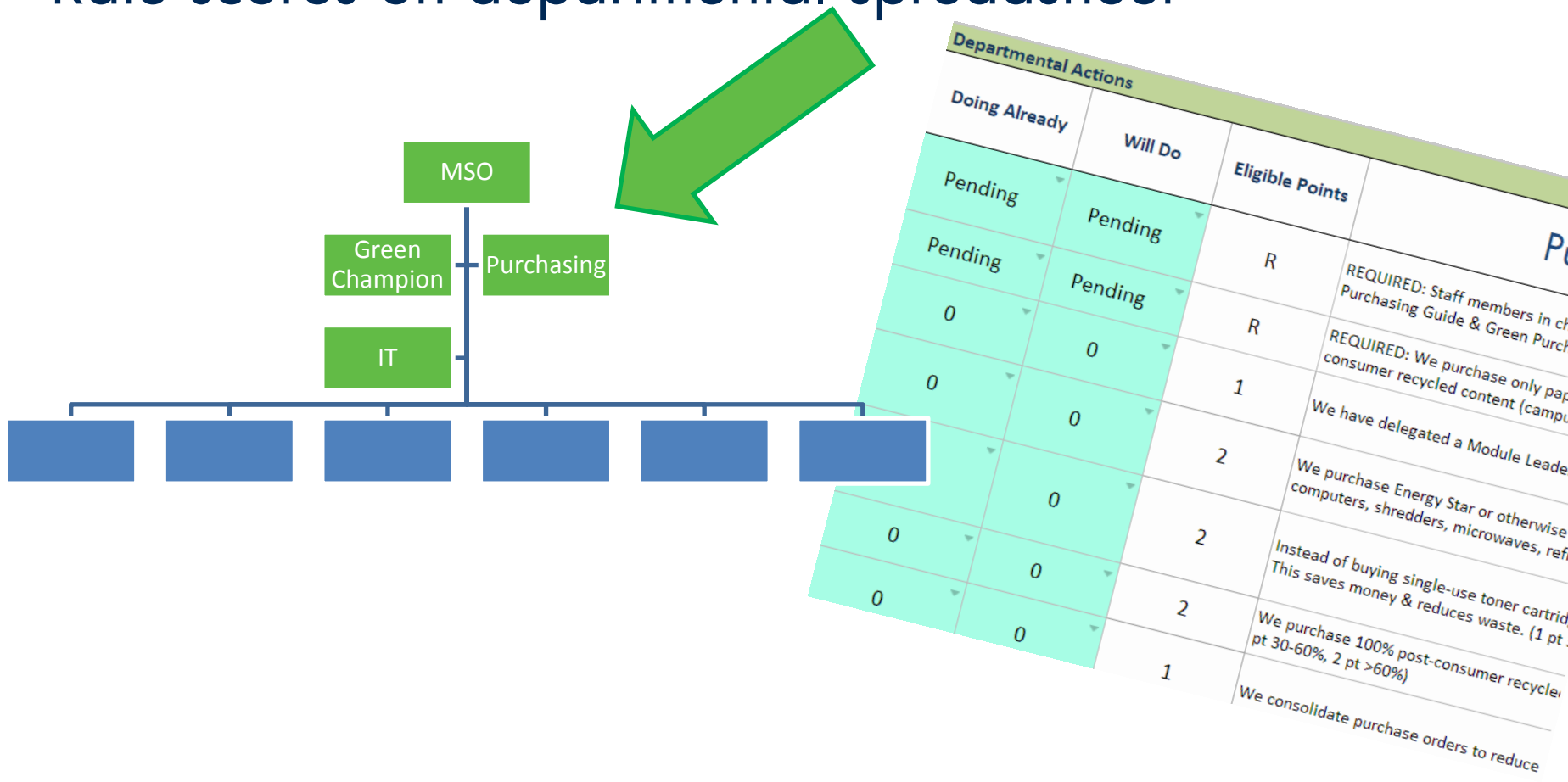
- Lunch vouchers
- Bike Lite
- Power stickers
- Battery recycling
- Games
- Coupons
- Fitness maps



# Departmental Assessment

**Green Team review and take action**

Rate scores on departmental spreadsheet





# Departmental Assessment

**Green Team review and take action**

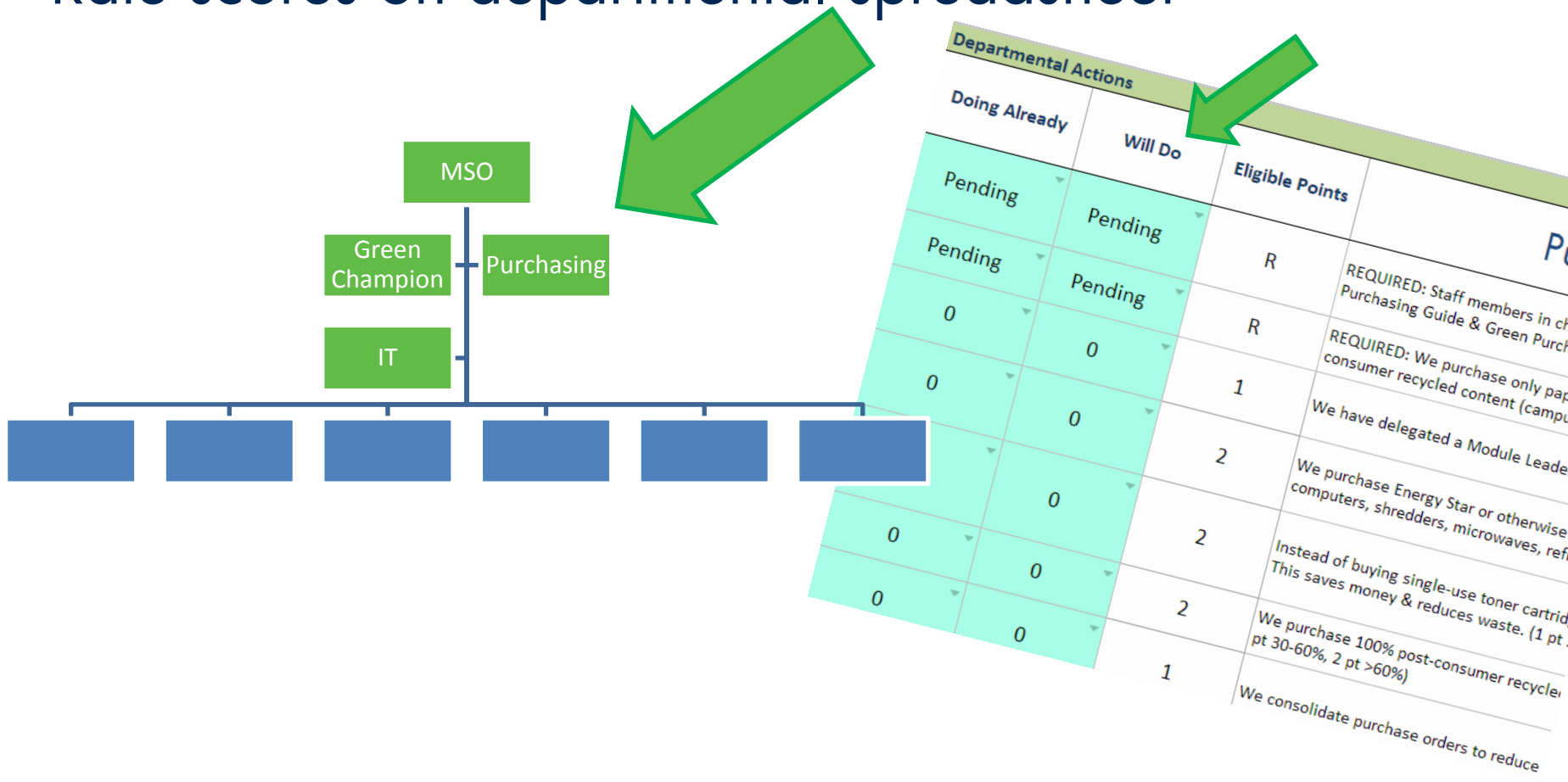
Rate scores on departmental spreadsheet



# Departmental Assessment

**Green Team review and take action**

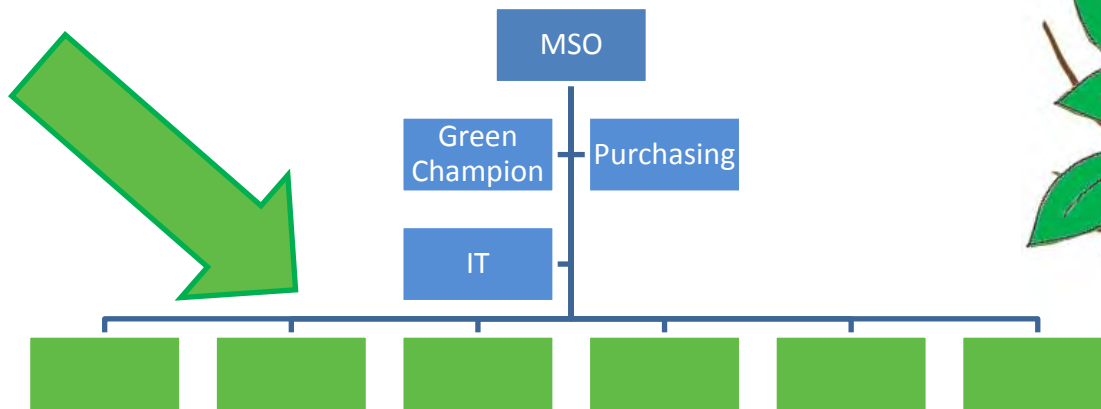
Rate scores on departmental spreadsheet



# Personal Assessment

**Everybody makes changes at their site**

- Make Green Leaf Pledge—*Stretch!*
- Fill out on-line questionnaire



**Sustainabili-tree**

Make your pledge now!

# Green Leaf Questionnaire – 10 min

## Achievement:

- Bar Chart at end
- 50% Passing score
- Go for 80%!

## What is the record for highest participation percent?

- Departments up to 120 people !





# Green Leaf Questionnaire

**100% !!!**

- Account & Financial Services – 100%
- Campus Planning - 100%
- Arboretum Department – 100%
- Academic Senate – 100%
- Facilities Management – 97%
- Office of University Registrar – 97%

**Join the “Century Club”**



# Orientation and Training

## GREENWORKPLACE Workshops

Interested in helping your office or lab become more environmentally sustainable?

**yes!**

Then join Green Workplace, a program dedicated to supporting sustainable actions in labs and offices on campus.

The Green Workplace workshops are coming to your neighborhood:  
Gateway District: Mrak Circle, Mondavi Quad

### Orientation & Training Schedule

All workshops will be held from: 12:10 - 12:50pm

	King Classroom	RMI 10xx
Leader Briefing		February 10
Green Team Briefing*	February 10	February 24
Kickoff & Walkthrough	February 17	March 10
Energy & Trash Talk	March 3	March 24
Health & Ergonomics	March 17	April 7
Green Commute	March 31	April 21
Celebrate	TBA!	TBA!

Learn how your office, department or lab can save energy, plastic and help achieve campus goals such as Zero Waste by 2020, and Climate Neutral by 2025, while boosting performance and community spirit.

Come to one or all workshops and see why over 50 labs and offices are already participating!

**Enroll at a workshop or email [greenworkplace@ucdavis.edu](mailto:greenworkplace@ucdavis.edu).**

“I'm so glad you had all this set up so I didn't have to create it from scratch.”  
Stacey Parker, Arboretum ...

## In your 'hood

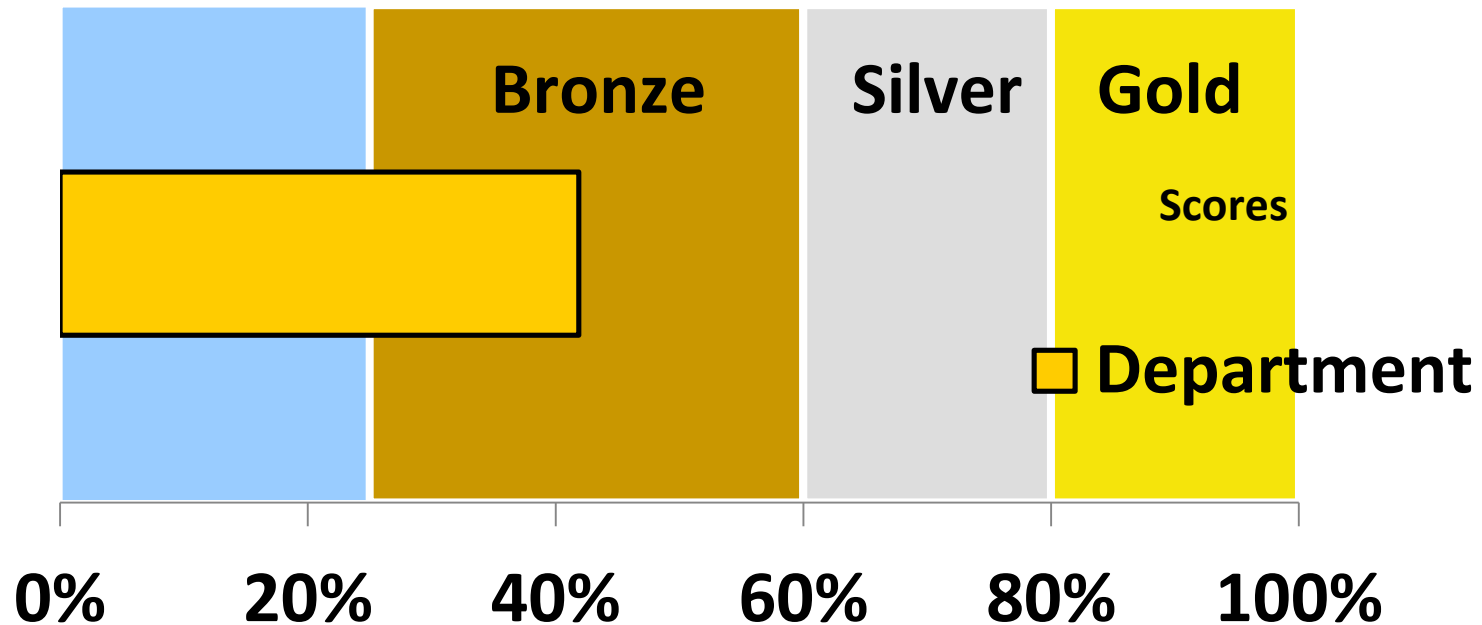
Optional, Drop-in

- Energy & Trash Talk!
- Health, Ergonomics
- Biking, TAPS

Celebrate!

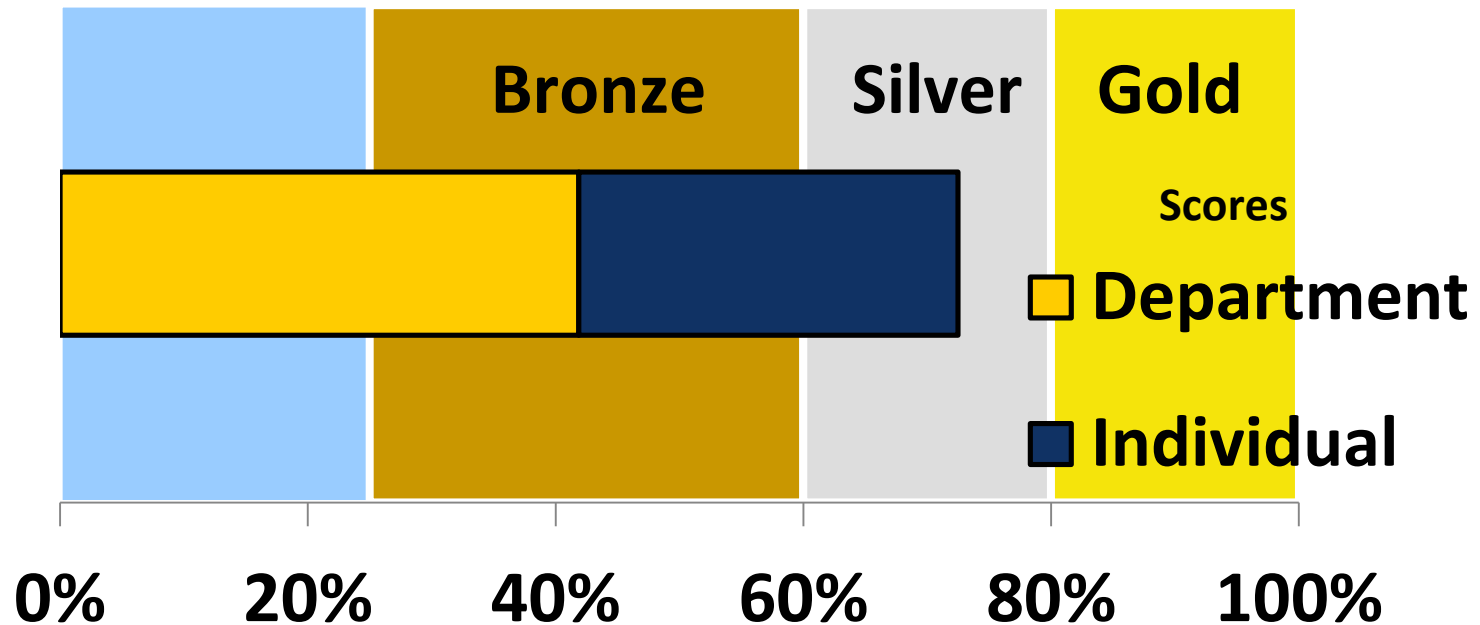
# Certification Scoring

**Department Points Only Go So far...**



# Certification Scoring

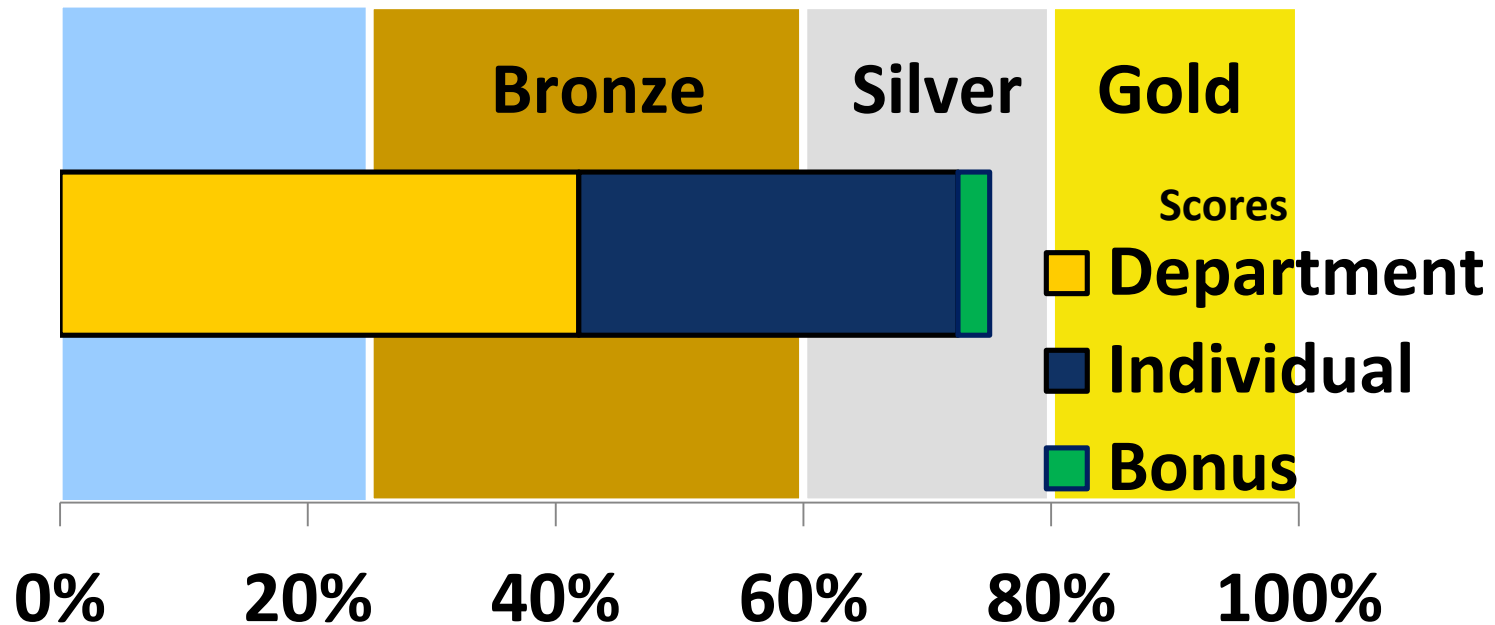
**Department + Personal Points Move Up!**





# Certification Scoring

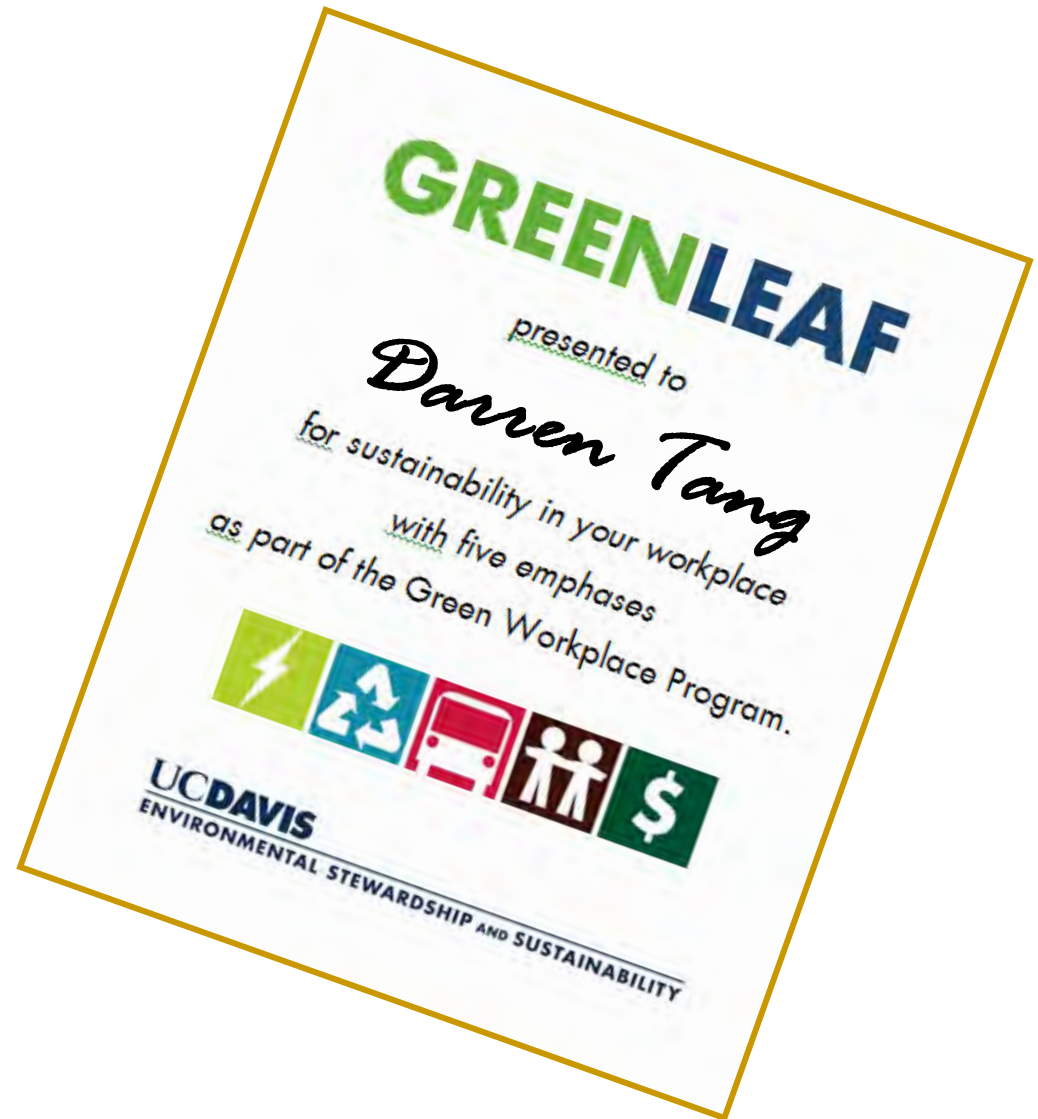
**Bonus Points for your innovations**



# 4

## Recognition:

- Personal Certificate



# 4

## Recognition:

### Departmental Certificate



# 4



## Certify

## Acknowledge & Celebrate

- Website page

Email  
Signature





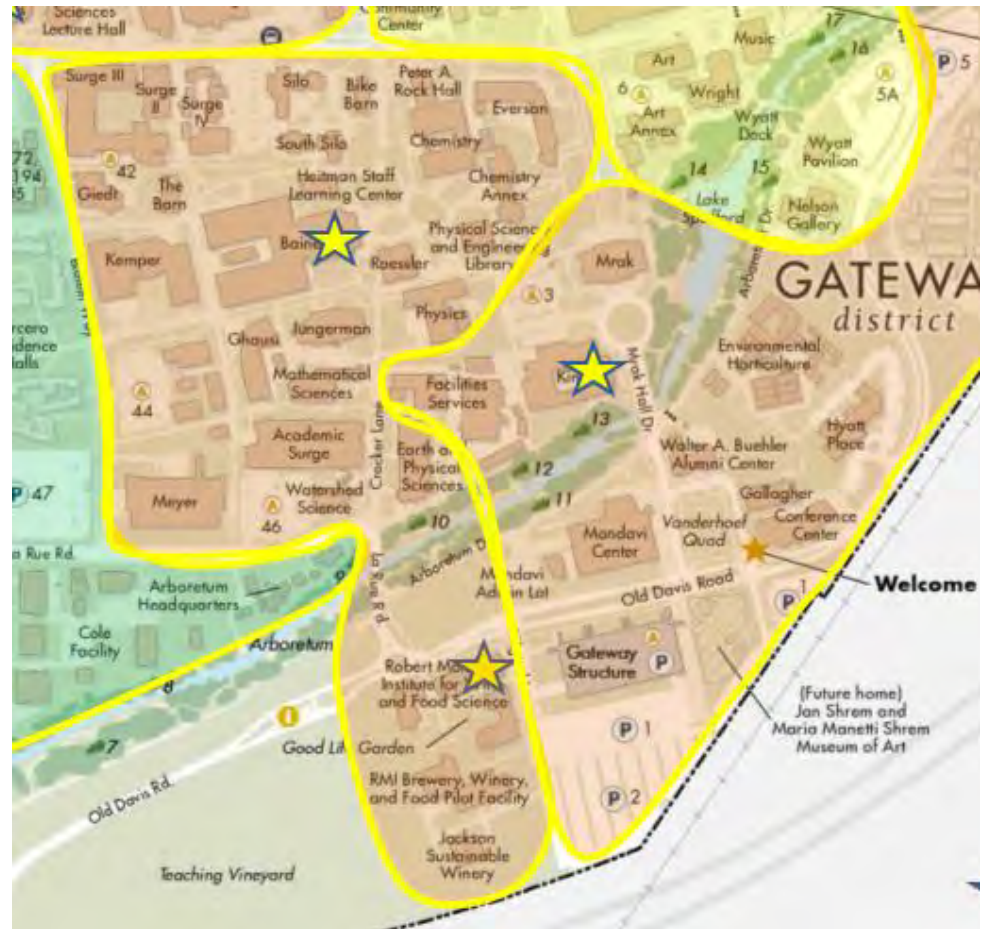
# Green Neighborhood, Winter 2015

## Food, Animal and Physical Sciences

- Hutchison Ave – RMI

## Training Sites

- King Hall
- Robert Mondavi Institute
- Bainer



# Your neighbors say,



**Bruce German**

It was a great program that brought our very disparate group together.



**Jenn Radke, BFTV**

Green Workplace makes sense for the basic values of our departments.

# Your neighbors say,

## Jared Shaw, Chemistry

Green Lab has been extremely helpful in making the process painless, productive and, dare I say, fun!

Many faculty members have a strong desire to help the chemistry department join with the campus sustainability initiatives and the key to its success is having one place to go to get things rolling, and Green Lab provides this important resource.



# Thank you!

**Sign up for Green Workplace on the link below.**

- Green Workplace [interest form](#)

**Please view another slide show on green practices for an office or lab.**